

TIRDESAL

WOODEN ITEMS

[@TIRDESAL](#)

[+34 938 50 90 23](#)

[TIRDESAL.COM](#)

[TIRDESAL@TIRDESAL.COM](#)

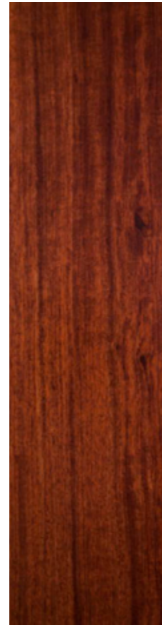
Welcome to our showcase of premium wood craftsmanship. Our woodwork highlights versatility, quality, and innovation, demonstrating the types of finishes, textures, and products we can create. Each section reflects our expertise in transforming wood into functional, aesthetic, and tactile pieces for diverse industries.

COMPLEMENTS 6
INDUSTRIAL 24
COSMETICS 34
SWITCH FRAMES 58
TOYS 100





Maple



Bubinga

Sapele



Cherry



Oak



Iroko

Ayous



Pine



Wenge



Ash

Walnut



Beech





— Oak in a raw,
unvarnished
finish





— Beech with a natural matte finish





— Beech in a raw,
unvarnished
finish



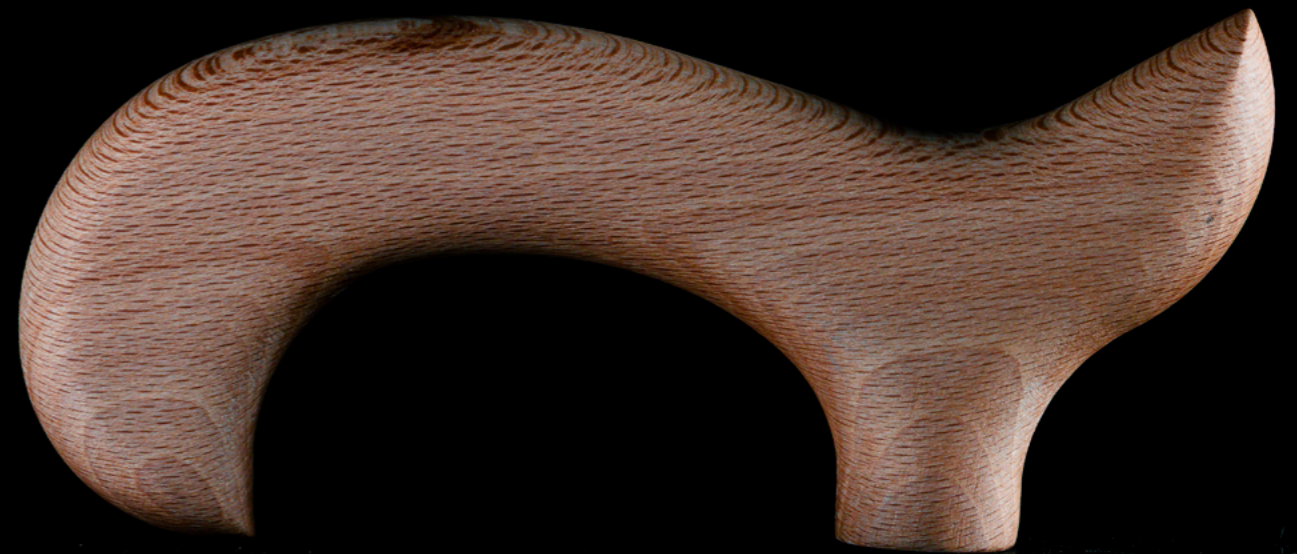


- Bubinga with a satin natural finish





— Beech with a natural matte finish





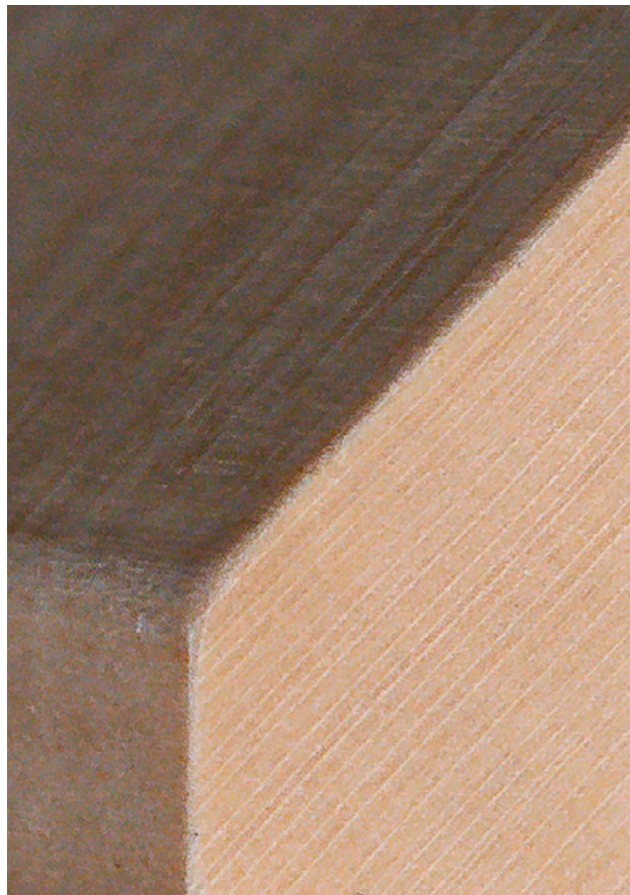
- Walnut wood with a natural matte varnish finish





— Beech in a raw,
unvarnished
finish





- Maple with a transparent natural finish
(preserves the original wood colour)





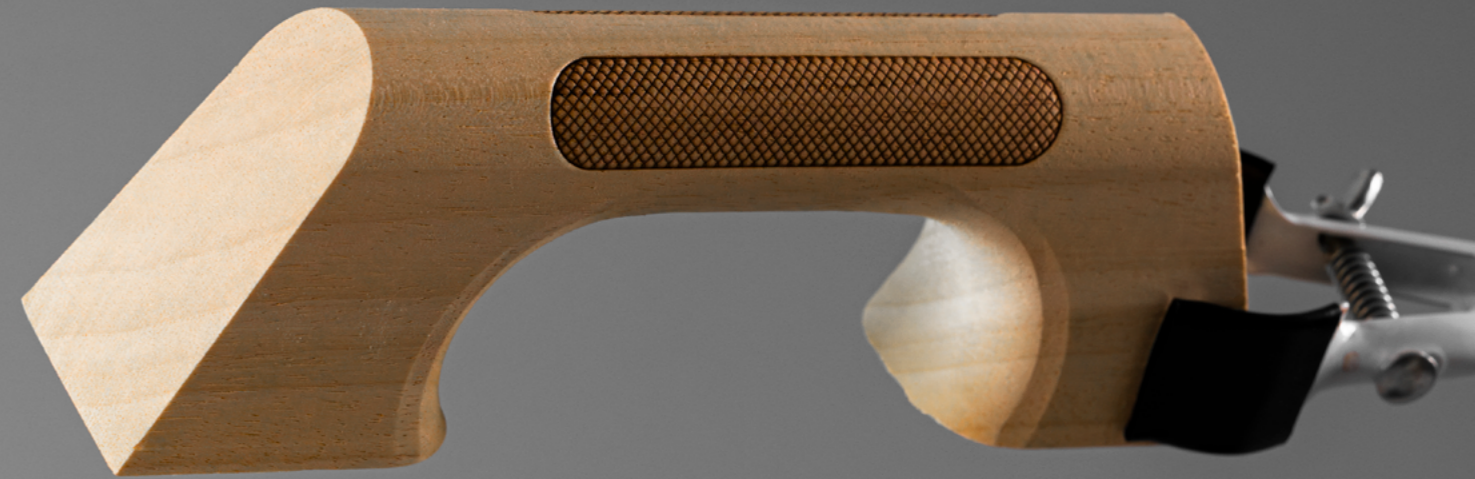


— Ayous with a natural varnish finish



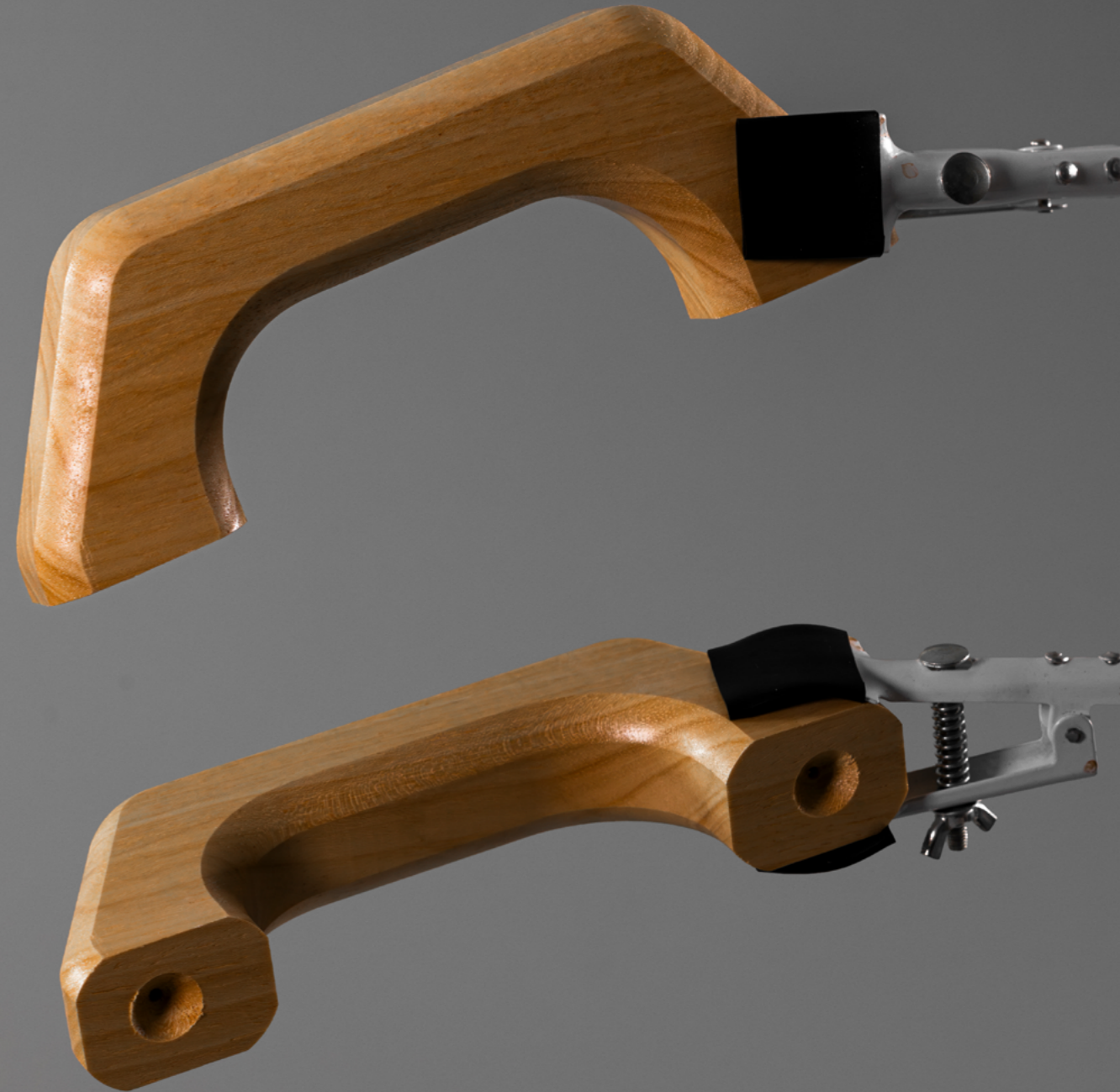


— Ayous in a raw, unvarnished finish with hot stamping





— Ayous with a natural finish





— Beech with a dipped natural varnish finish

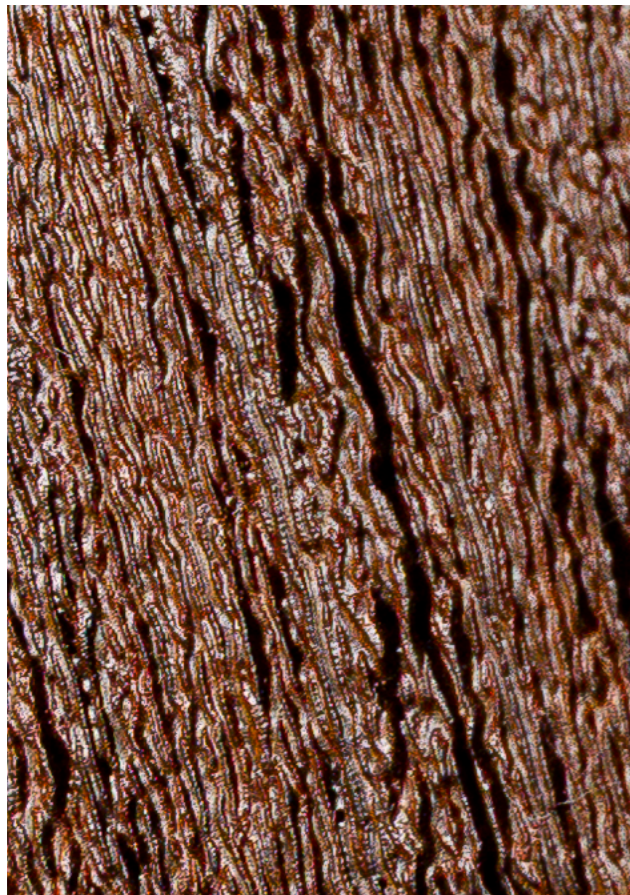


- In cosmetic packaging, many wooden caps end up with a uniform, sealed surface that distances them from the authenticity of real wood.

At Tirdesal, we take the opposite approach. We have developed our own internal method for treating wood in a way that enhances its natural texture, allowing the grain to remain both visible and tangible, creating an organic feel that is true to the material.

This textured effect is not limited to a specific species: it is the result of how the wood is worked during production. The outcome is a wooden component that not only looks real, but feels real.





— Iroko with a textured grain and natural varnish finish





— Ash in a raw,
unvarnished
finish





- Iroko with a textured grain and satin natural varnish finish





- Beech with a natural matte finish and hot stamping





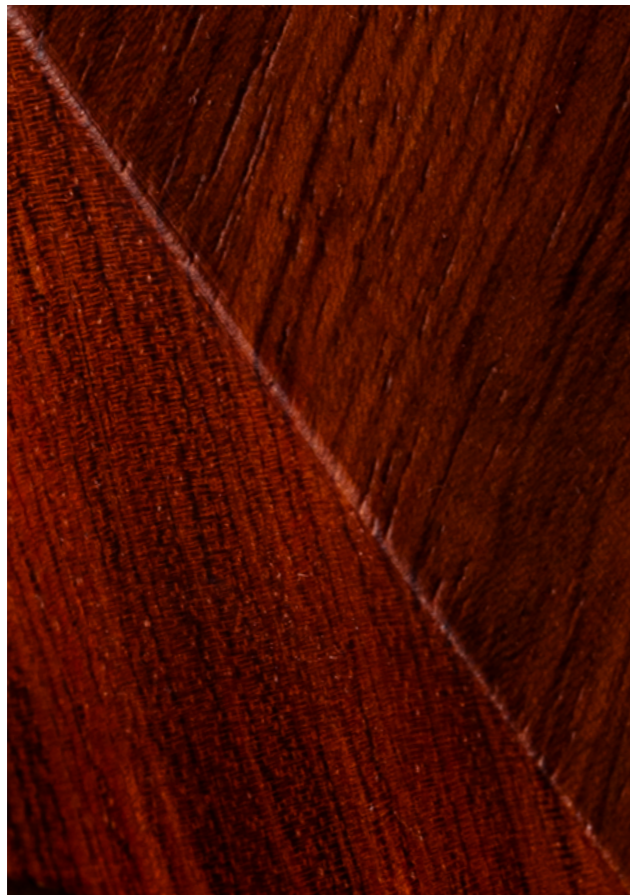
— Beech in a raw,
unvarnished
finish





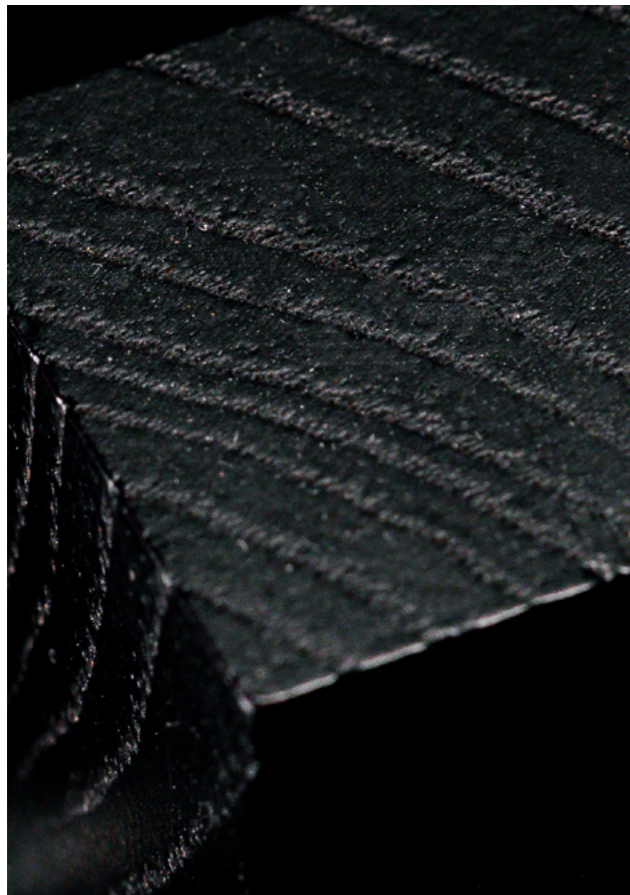
— Iroko with a textured grain and satin natural varnish finish





— Bubinga with a natural matte finish





— Ash with a
black-stained
satin finish





— Ash with a textured grain and natural matte finish





— Iroko in a raw,
unvarnished
finish





- Working with wood at a high level of technical detail presents its own challenges, particularly when producing components with reduced thickness or complex geometries.

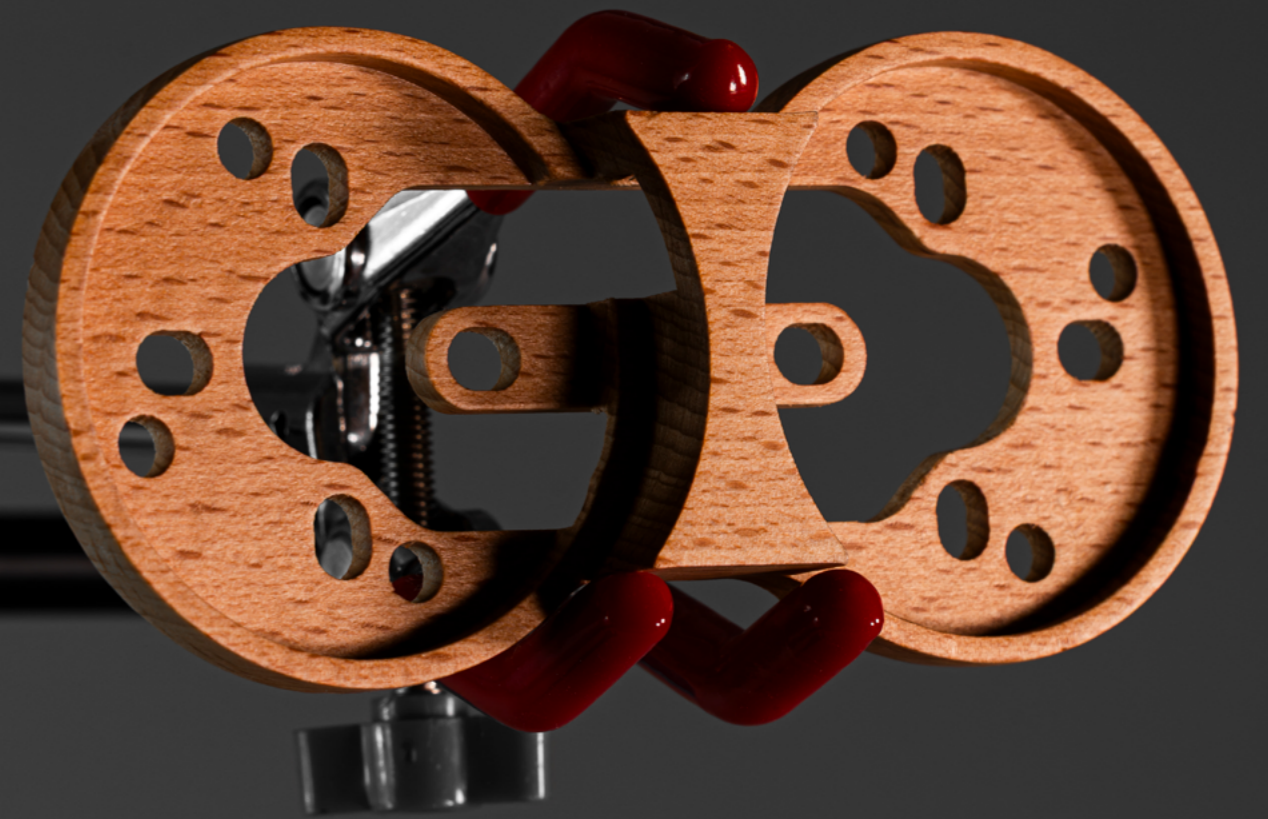
For applications such as switch frames, our production relies on advanced CNC machining to achieve precise and repeatable results. These pieces require a level of accuracy that leaves very little margin for deviation.

Through a controlled manufacturing process and close attention to finishing, we are able to produce wooden components with clean edges, defined openings and refined surfaces that meet the demands of contemporary design while preserving the authenticity of natural wood.





— Beech with a natural matte finish





— Beech with a natural matte varnish finish





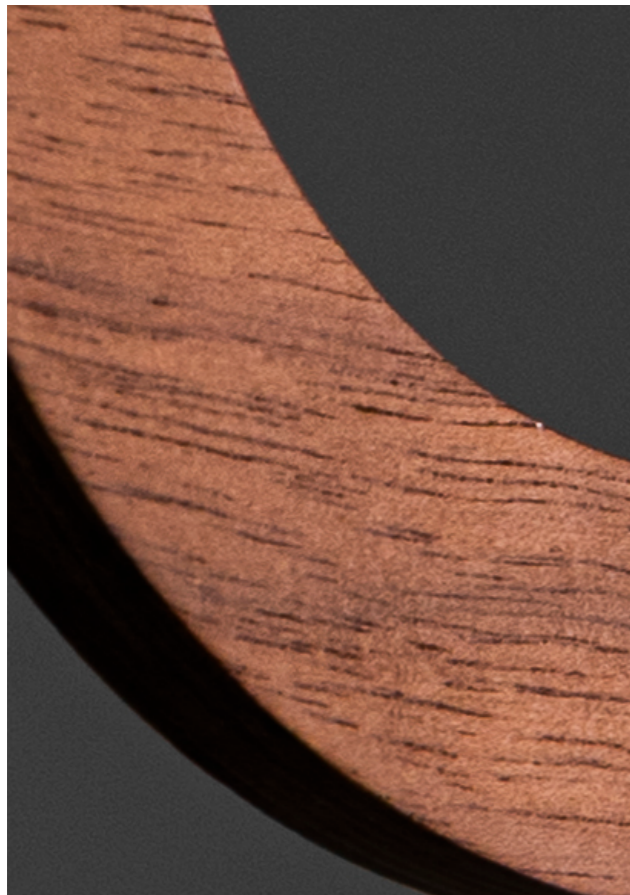
— Sapele with a natural matte finish





— Wenge plywood
with a natural
matte varnish
finish





— Walnut plywood
with a natural
matte varnish
finish





— Ash with a wenge-stained satin finish





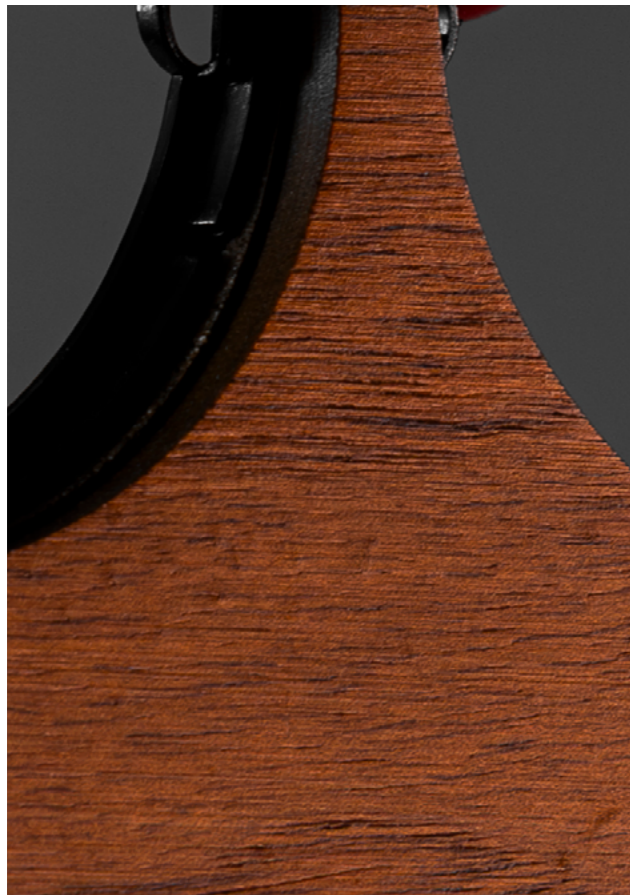
- Oak with a hazelnut-stained satin finish





— Walnut plywood
with a natural
matte varnish
finish





- Walnut plywood with a natural matte varnish finish





— Ash with a wenge-stained satin finish





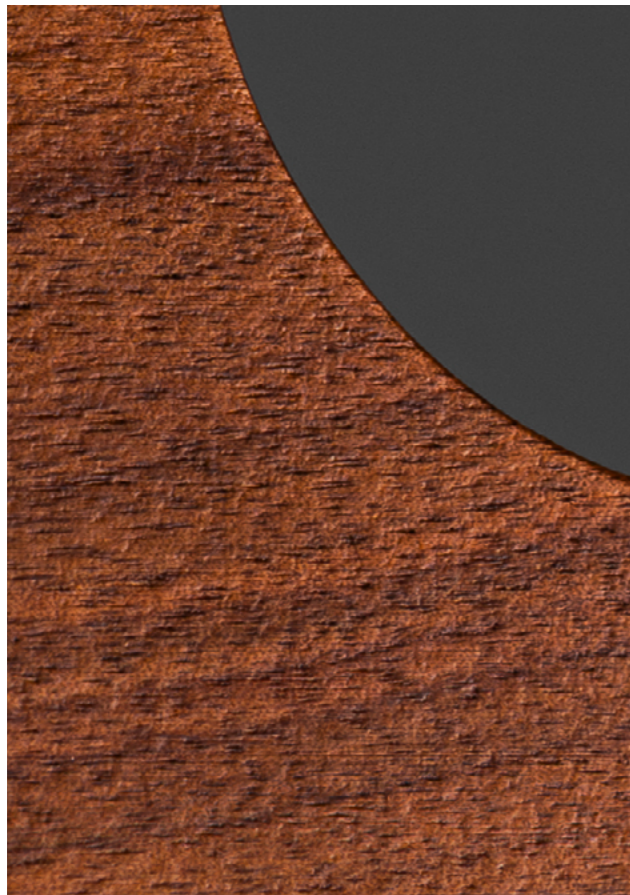
— Beech with a natural matte finish





— Beech with a vintage aged matte finish



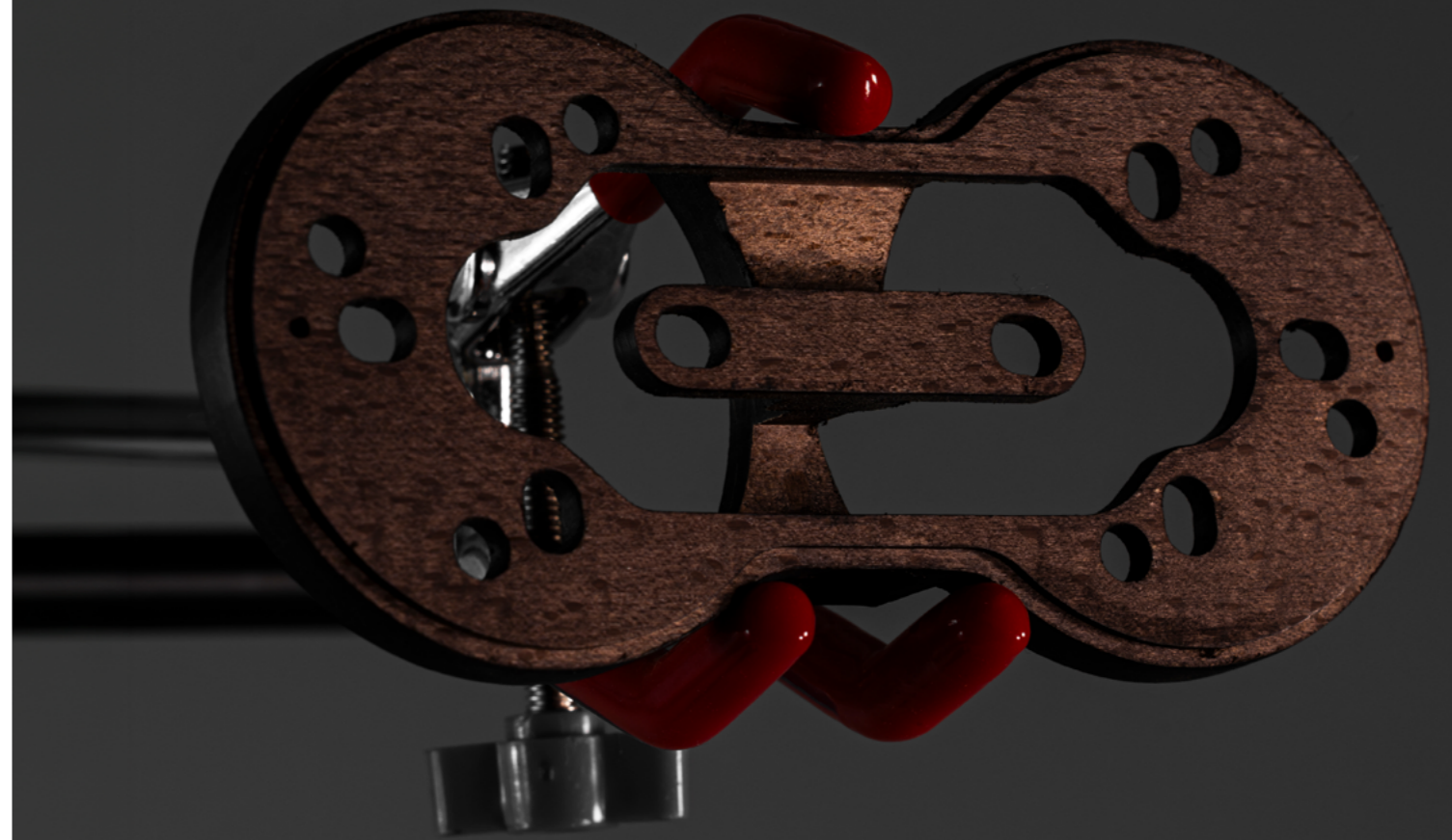


- Walnut plywood with a natural matte varnish finish





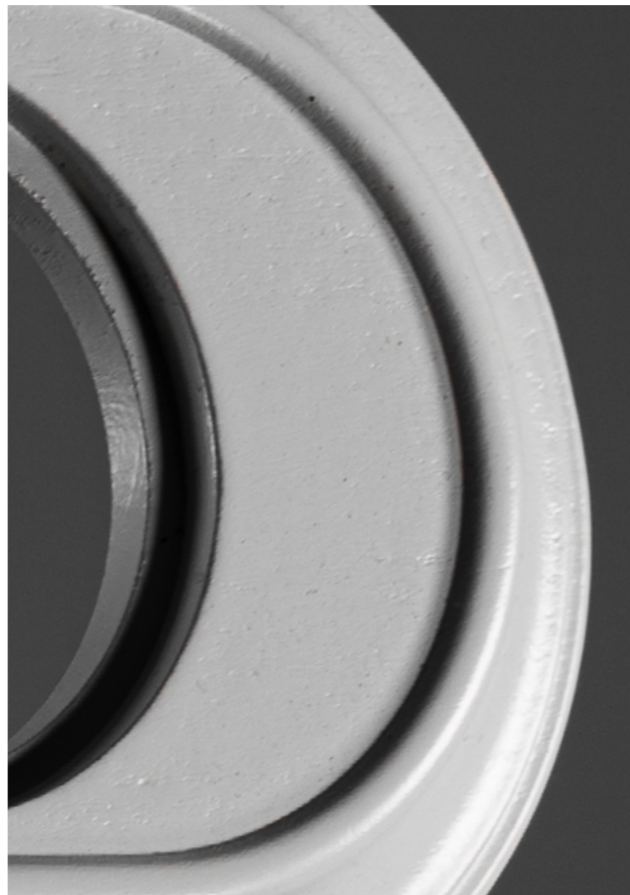
— Beech with a darkened matte finish





— Walnut plywood
with a natural
matte varnish
finish





— Beech with a white lacquered finish





— Beech plywood
with a natural
matte finish





— Beech with an aged matte finish





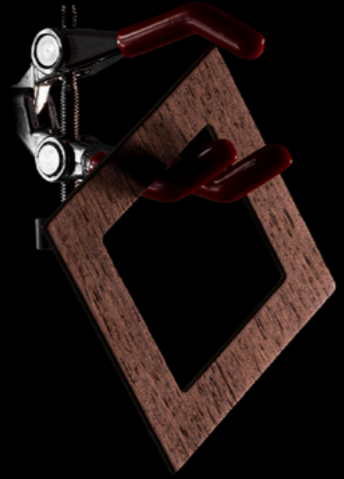
— Beech plywood
with a natural
matte finish





— Walnut plywood
with a natural
matte varnish
finish







— Beech with a natural finish





— Beech in a raw,
unvarnished
finish





— Beech with a wenge-stained matte finish









2026
@TIRDESAL
TIRDESAL.COM
TIRDESAL@TIRDESAL.COM





[@TIRDESAL](https://www.instagram.com/TIRDESAL)

[+34 938 50 90 23](tel:+34938509023)

[TIRDESAL.COM](https://www.tirdesal.com)

TIRDESAL@TIRDESAL.COM